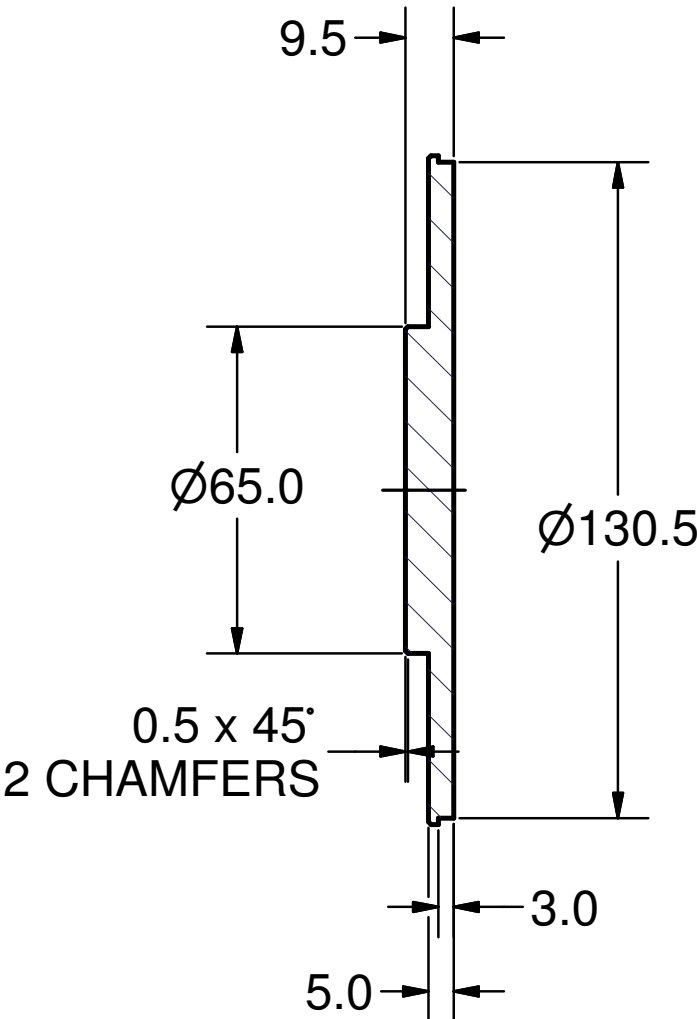
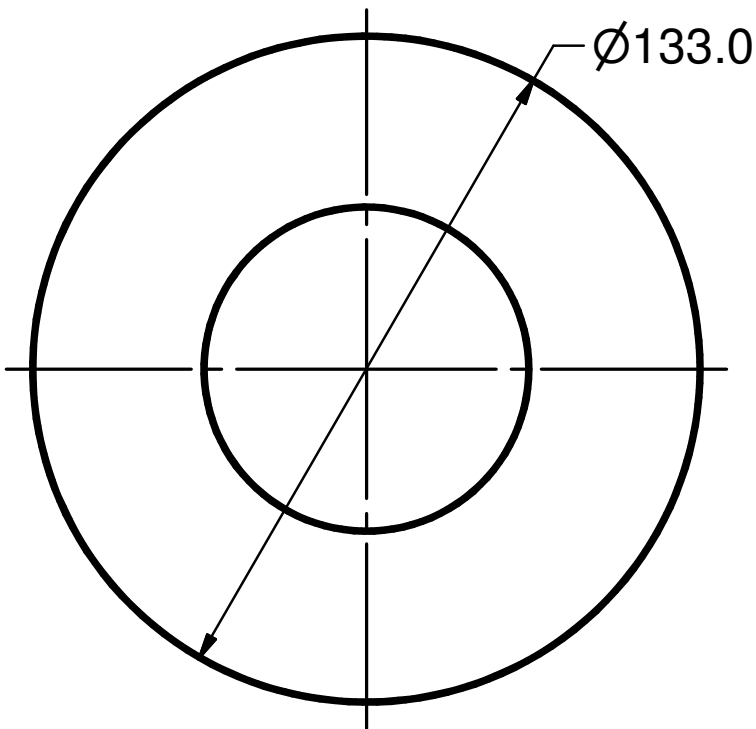




3.2 / (✓)



Issued all design changes as Rev C (TIO) - 4/19/07 - SAB

										Rev. C	
								Scale : 1:2		mat: Stainless Steel, 304	
								ASSEMBLY : 75 kW CW Input Coupler			
					Date	Name	DESIGNATION :  TOP PLATE				
				Drawn	10/5/04	Churanov					
				Checked	08-06-05	VM					
				Standard							
							100.340.003				
State	Changes	Date	Name						1		
									A4		

